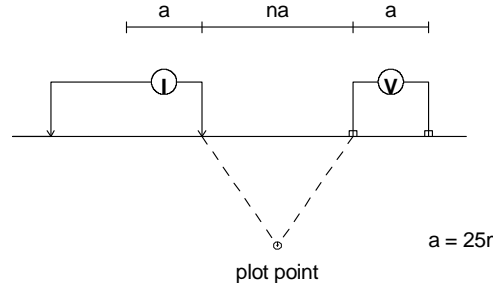


STACKED PSEUDOSECTIONS MAP  
APPARENT CHARGEABILITY

Modified Pole-Dipole Array

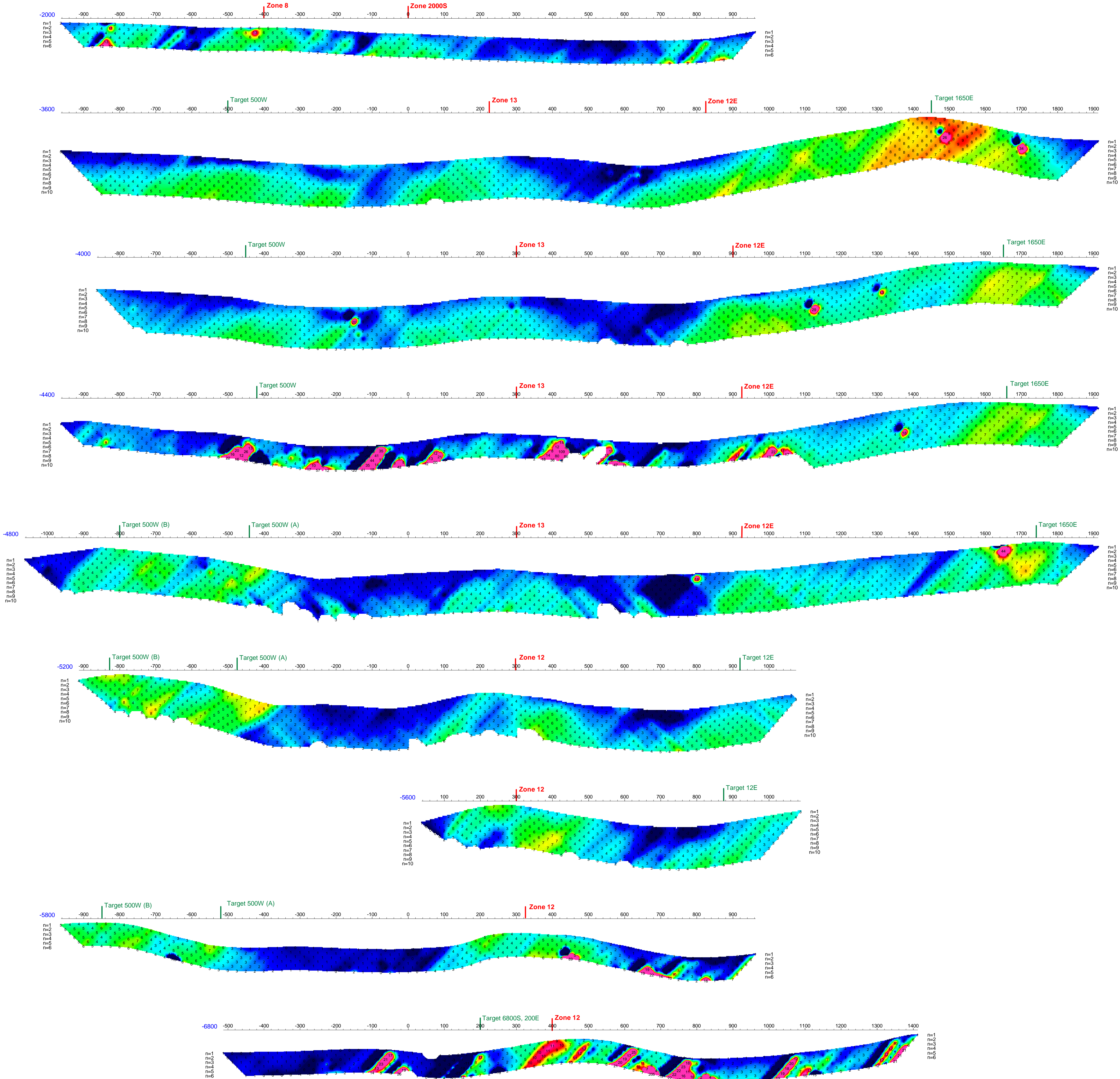
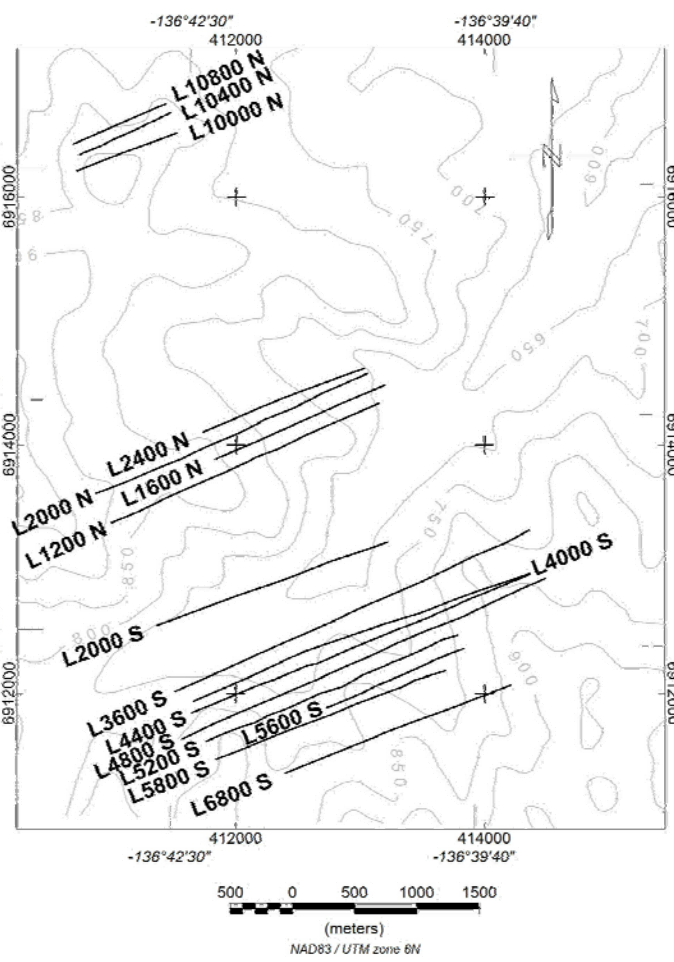


L2000S Stationary electrode at West end of line.  
L3600S Stationary electrode at Stations 1000W & 275E.  
L4000S Stationary electrode at Stations 900W & 275E.  
L4400S Stationary electrode at Stations 1000W & 650E.  
L4800S Stationary electrode at West end of line.  
L5200S Stationary electrode at West end of line.  
L5600S Stationary electrode at West end of line.  
L5800S Stationary electrode at West end of line.  
L6800S Stationary electrode at West end of line.

Receiver: Iris ElrecPro

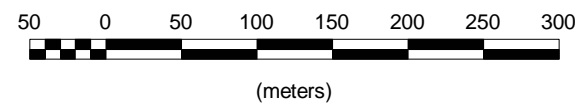
Transmitter: GDD Tx-II 3.6kW

Data File: all lines 25-final.gdb



Apparent Chargeability  
mV/V

Scale 1:5000



WESTERN COPPER CORPORATION

INDUCED POLARIZATION SURVEY

CARMACKS COPPER PROJECT

APPARENT CHARGEABILITY - 25m DIPOLES

STACKED SECTIONS - SOUTH LINES

Mining District: Whitehorse

NTS: 115 I/07

Job: WRN-7506-YT

Date: 16 Jan 08

AURORA GEOSCIENCES LTD.